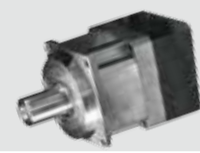
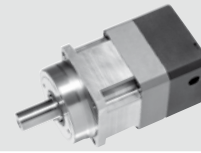




Micron® True Planetary Gearheads

Quick Selection Guide

Micron® Quick Selection Guide



Product Line		UltraTRUE	ValueTRUE
Prefix		UT/UTR	VT/VTR
Maximum Backlash (for the product life) ⁽¹⁾	[arc/min]	4/5	4/5
Lower Backlash Option		N	N
Price Relationship		1.2 ×	0.7 ×
In-line Frame Sizes / Right Angle Frame Sizes	[mm]	60 - 220 / 60 - 140	60 - 220 / 60 - 140
In-line Ratio Availability / Right Angle Ratio Availability ⁽²⁾		4:1 - 100:1 / 1:1 - 50:1	4:1 - 100:1 / 1:1 - 50:1
Double Stage Available		Y	Y
Torque Capacity Relationship		2.8 ×	2.6 ×
True Planetary Gearing / Helical Crowned Gearing		Y / Y	Y / Y
Expected Noise Level	[db]	66	66
Modification Costs		Very Low	Low
Lubricated for Life		Y	Y
Efficiency	[%]	95	95
Dual and Hollow Shafts Available		N	N
Housing Material		Stainless and Aluminum	Stainless and Aluminum
3D CAD Models on Micron Motioneering		Y	Y
One Piece Output Shaft/Carrier / Internal Gear Machined into Housing		Y / Y	Y / Y
Maximum input speed ⁽⁶⁾	[RPM]	6000	6000
ROHS Compliant ⁽⁷⁾ / Case Hardened Gears (HRC60)		Y / Y	Y / Y
Gearhead Express ⁽⁵⁾		Y	Y
Low Temperature Grease Available / Food Grade Grease Available / NSF Certified ⁽⁸⁾		Y / Y / N	Y / Y / N
RediMount Compliant		Y	Y
Competitor Matrix (maker and model)	Alpha	SP+, SPK+	SP+, SPK+
	Parker/ Bayside	PS, RS	PS, RS
	Neugart	PLS, WPLS	PLS, WPLS
	Apex	AF, AFR	AF, AFR
	Stober	P, PK, PKX	P, PK, PKX
	Gam	SPL-W, SPLH-W	SPL-W, SPLH-W

(1) Backlash is measured at the output shaft, with the input fixed, using 2 % of the rated torque in both directions.

(2) Other ratios available, contact customer support for more information.

(3) Double stage AquaTRUE now available.

(4) Lower backlash, high precision available (8/9 arc-min).

(5) Gearhead express not available in frame sizes larger than 140 mm or dual and hollow shafts.

10 Reasons to Choose Micron® Gearheads

1 RediMount™ – Fast and Error Free Motor Mounting

The unique RediMount system will mount any Micron gearhead to any motor in just three simple steps in less than five minutes!

2 Easy Sizing and Selection with Micron Motioneering

Micron Motioneering is the most accurate and user friendly gearhead sizing and design tool on the market. Try it at www.micronmotioneering.com.

Easy sizing and selection with
www.MicronMotioneering.com

3 Superior Technology

All Micron gears are case hardened to HRC60 for longer life. Our UltraTRUE and ValueTRUE models have a higher helix angle (15 °) than our competitors' helical gearheads resulting in less backlash, smoother and quieter operation and longer life.

4 Fast Deliveries

Micron offers 1 – 2 week standard lead times on all standard catalog products. For quicker shipping, use our 24 hour "Gearhead Express" delivery service which is available for all models for just a 10 % premium!

24 hour deliveries with
Micron Gearhead Express™

				
EverTRUE	DuraTRUE	NemaTRUE	XTRUE	AquaTRUE
ET	DT/DTR	NT/NTR	XT, XTA	AQT
4/5	8/9	13/15	13/15	13/15
N	N	Y (4)	Y (4)	Y (4)
1.5 ×	1.0 ×	0.5 ×	0.4 ×	1.5 ×
100 - 180 / -	60 - 140 / 60 - 140	60 - 15 (23 - 42) / 60 - 115 (23 - 42)	40 - 160 / -	60 - 160 / -
4:1 - 100:1 / -	3:1 - 100:1 / 1:1 - 500:1	3:1 - 100:1 / 1:1 - 500:1	3:1 - 100:1 / -	3:1 - 100:1 / -
Y	Y	Y	Y	Y (3)
2.8 ×	1.0 ×	0.7 ×	1.1 ×	1.1 ×
Y / N	Y / N	Y / N	Y / N	Y / N
68	68	68	68	68
Low	Very Low	Very Low	Low	Low
Y	Y	Y	Y	Y
95	93	93	93	93
N	Y	N	N	N
Stainless and Aluminum	Anodized Aluminum	Anodized Aluminum	Anodized Aluminum	100 % Stainless
Y	Y	Y	Y	(coming)
Y / Y	Y / N	Y / N	Y / N	Y / N
6000	6000	6000	6000	6000
Y / Y	Y / Y	Y / Y	Y / Y	Y / Y
Y	Y	Y	Y	N
Y / Y / N	Y / Y / N	Y / Y / N	Y / Y / N	Y / Y / Y
Y	Y	Y	Y	N
SP+ High Speed			CP, LP	SG
	PG, RA, PX, RX	NE, NR, PX-N, RX-N	PV	
			PLE	
	AB, ABR, PG	AN, PN, ANR	AE, PE	
		PE-N	EPL, PE	

(6) Speeds greater than 6000 RPM need to be reviewed by application engineering.
 (7) ROHS on right angle product is still being confirmed.
 (8) The AquaTRUE is certified to NSF/ANSO STD 169.

(9) All products are dimensional drop in replacement, the catalog should be reviewed for length and width details.

5 Lubricated For Life

Micron gearheads require no maintenance and are grease filled. Unlike oil filled units, they can be mounted in any orientation and will never leak.

6 Easy Customization

We welcome modification requests as well as "white paper" custom opportunities. The modular design of our products allows modifications to be easily implemented with small impacts to price and delivery.

7 Unmatched Product Breadth

Micron has the largest selection of planetary gearheads in the world with over 3000 size and ratio combinations.

8 Unmatched Quality

All Micron gearheads are tested through our state of the art end of line tester, making our outgoing quality best in the market.

9 Commitment to New Product Development

Micron was first to launch an all stainless steel, IP69K gearhead for the food and beverage market. The AquaTRUE is designed for the most harsh and corrosive environments.

10 Made in the USA

All Micron Gearheads are manufactured in the USA making us able to respond to emergencies quickly reducing down time for our customers.

EUROPE

United Kingdom

Thomson
Phone: +44 (0) 1271 334 500
Fax: +44 (0) 1271 334 501
E-mail: sales.uk@thomsonlinear.com

Germany

Thomson
Nürtinger Straße 70
72649 Wolfschlugen
Phone: +49 (0) 7022 504 0
Fax: +49 (0) 7022 504 405
E-mail: sales.germany@thomsonlinear.com

France

Thomson
Phone: +33 (0) 243 50 03 30
Fax: +33 (0) 243 50 03 39
E-mail: sales.france@thomsonlinear.com

Italy

Thomson
Largo Brughetti
20030 Bovisio Masciago
Phone: +39 0362 594260
Fax: +39 0362 594263
E-mail: info@thomsonlinear.it

Spain

Thomson
Rbla Badal, 29-31 7th, 1st
08014 Barcelona
Phone: +34 (0) 9329 80278
Fax: + 34 (0) 9329 80278
E-mail: sales.esm@thomsonlinear.com

Sweden

Thomson
Estridsväg 10
29109 Kristianstad
Phone: +46 (0) 44 24 67 00
Fax: +46 (0) 44 24 40 85
E-mail: sales.scandinavia@thomsonlinear.com

SOUTH AMERICA

Thomson
Sao Paulo, SP Brazil
Phone: +55 11 3879-6600
Fax: +55 11 3879 6656
E-mail: sales.brasil@thomsonlinear.com

USA, CANADA and MEXICO

Thomson
203A West Rock Road
Radford, VA 24141, USA
Phone: 1-540-633-3549
Fax: 1-540-633-0294
E-mail: thomson@thomsonlinear.com
Literature: literature.thomsonlinear.com

ASIA

Asia Pacific

Thomson
750, Oasis, Chai Chee Road,
#03-20, Technopark @ Chai Chee,
Singapore 469000
E-mail: sales.apac@thomsonlinear.com

China

Thomson
Rm 2205, Scitech Tower
22 Jianguomen Wai Street
Beijing 100004
Phone: +86 400 6661 802
Fax: +86 10 6515 0263
E-mail: sales.china@thomsonlinear.com

India

Thomson
1001, Sigma Building
Hiranandani Business Park
Powai, Mumbai – 400076
Phone: +91 22 422 70 300
Fax: +91 22 422 70 338
E-mail: sales.india@thomsonlinear.com

Japan

Thomson
Minami-Kaneden 2-12-23, Suita
Osaka 564-0044 Japan
Phone: +81-6-6386-8001
Fax: +81-6-6386-5022
E-mail: csinfo_dicgj@danaher.co.jp

Korea

Thomson
F12 Ilsong Bldg, 157-37
Samsung-dong, Kangnam-gu,
Seoul, Korea (135-090)
Phone: +82 2 6917 5049
Fax: +82 2 6917 5007
E-mail: sales.korea@thomsonlinear.com