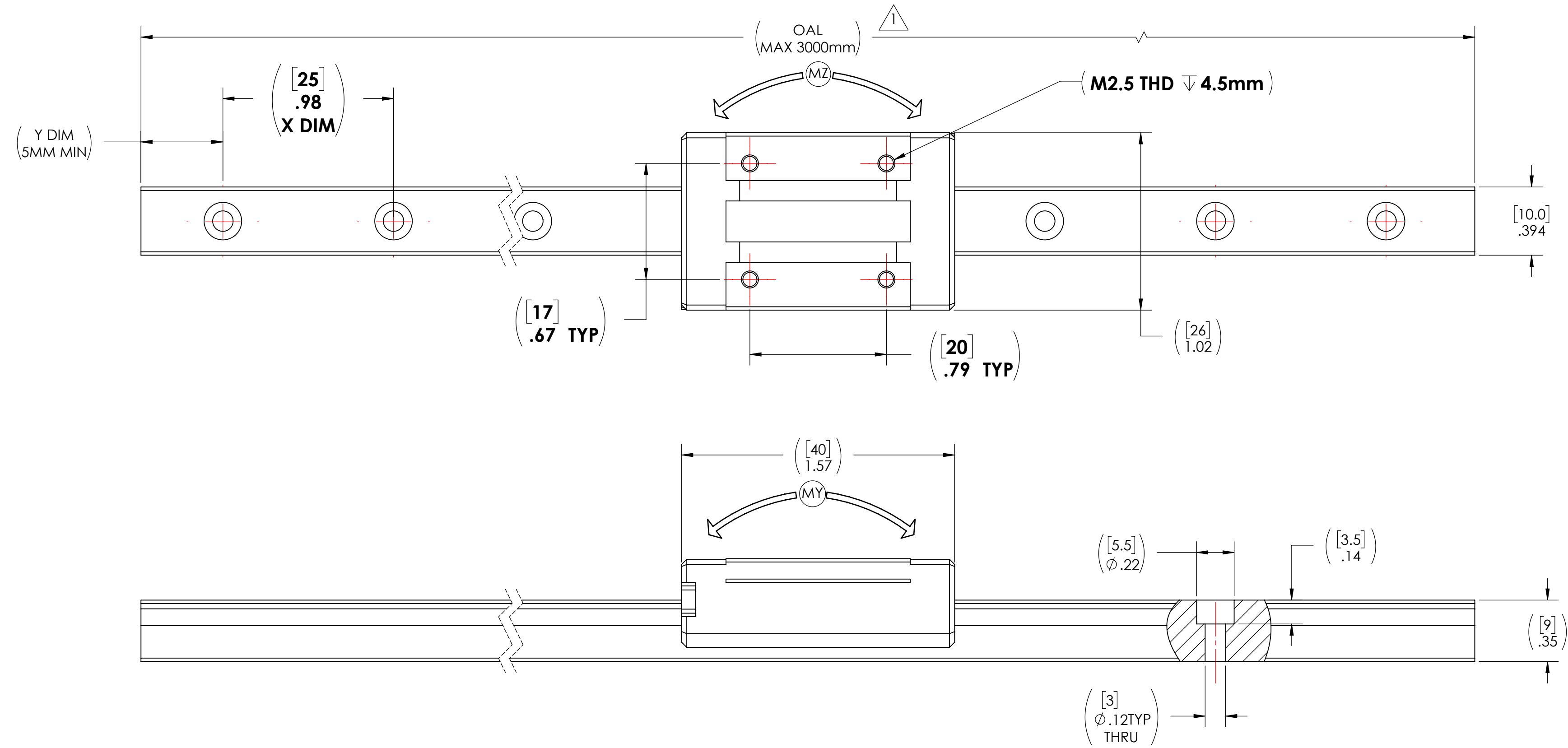


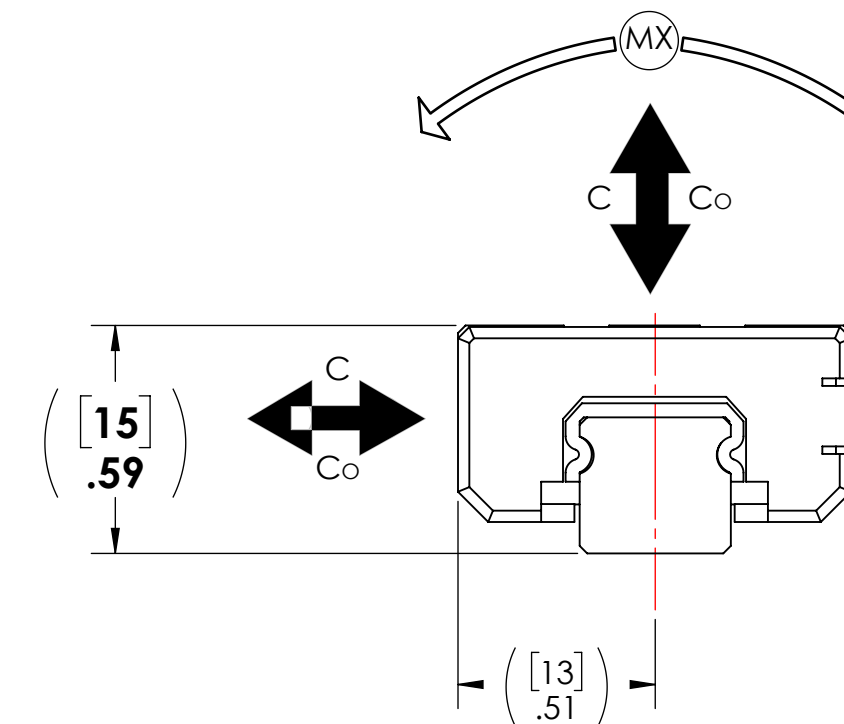
ACCUMINI 10mm ASSEMBLY



MOMENT RATINGS					
STATIC MOMENT (Nm ²)			DYNAMIC MOMENT (Nm ²)		
MX	MY	MZ	MX	MY	MZ
28	20	20	15	10	10

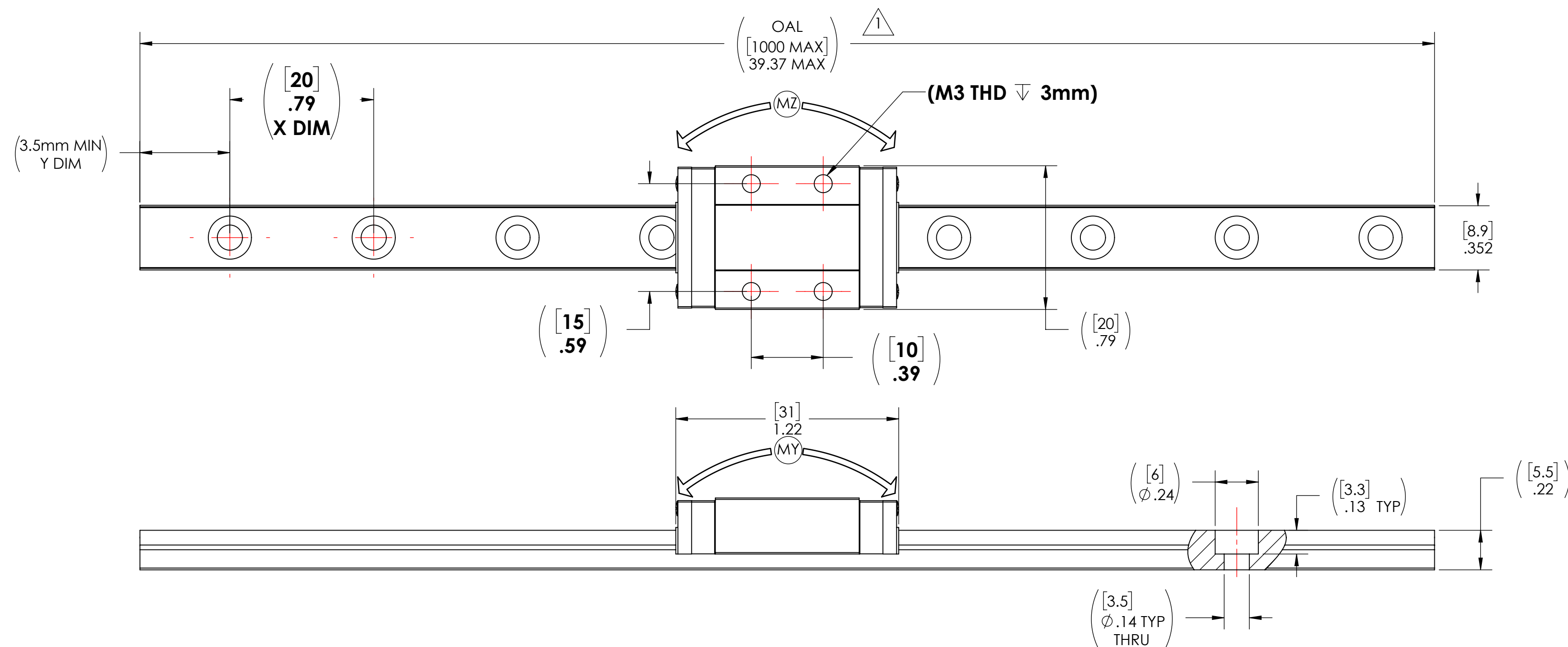
NOTES:

- MAXIMUM LENGTH FOR 1 PIECE RAIL CONSTRUCTION. BUTT JOINTING IS POSSIBLE FOR LONGER LENGTHS IF REQUIRED.
- CARRIAGE MATERIALS: POLYMER RETAINER, STAINLESS STEEL BALLS.
- CARRIAGES AND RAILS CANNOT BE INTERCHANGED BETWEEN PRODUCT FAMILIES.
- (2) ACCURACY CLASSES TO CHOOSE FROM (HIGH GRADE AND PRECISION GRADE).
- OPERATING PARAMETERS:
 - MAX VELOCITY= 3 m/s
 - MAX ACCELERATION = 50 m/s²
 - MAX TEMPERATURE= 80 °C
- DYNAMIC LOAD RATING = 3,553 N (BASED ON 50km LIFE).**
- STATIC LOAD CAPACITY = 5,300 N.
- SEE CATALOG OR WEBSITE FOR MORE DETAILS.
- DYNAMIC AND STATIC LOAD AND MOMENT RATINGS:
 - C = DYNAMIC LOAD
 - Co = STATIC LOAD
 - MX = YAW MOMENT
 - MY = PITCH MOMENT
 - MZ = ROLL MOMENT



ACCUMINI PART NUMBERS	
ASSEMBLY	xAD10AAxxLxxxx Y=xx
CARRIAGE	CD10AAxx
RAIL	RD10Lxxxx Y=xx

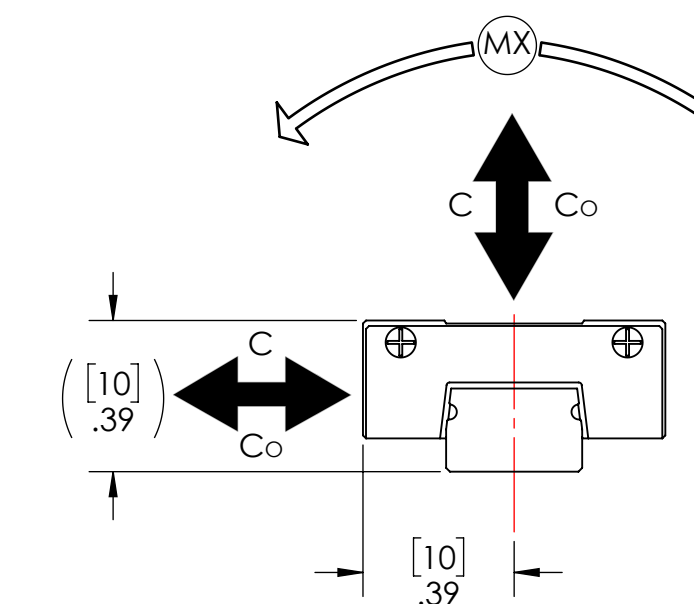
MICROGUIDE (TSR) 9mm ASSEMBLY



MOMENT RATINGS					
STATIC MOMENT (Nm ²)			DYNAMIC MOMENT (Nm ²)		
MX	MY	MZ	MX	MY	MZ
10.4	5.1	5.1	NOT RATED		

NOTES:

- MAXIMUM LENGTH FOR 1 PIECE RAIL CONSTRUCTION. BUTT JOINTING IS POSSIBLE FOR LONGER LENGTHS IF REQUIRED.
- CARRIAGES AND RAILS CANNOT BE INTERCHANGED BETWEEN PRODUCT FAMILIES.
- (3) ACCURACY CLASSES TO CHOOSE FROM (NORMAL GRADE, HIGH GRADE, OR PRECISION GRADE).
- OPERATING PARAMETERS:
 - MAX VELOCITY = 3 m/s
 - MAX ACCELERATION = 50 m/s²
- DYNAMIC LOAD RATING = 1,544 N (BASED ON 50km LIFE).**
- STATIC LOAD RATING = 2,360 N.
- SEE CATALOG OR WEBSITE FOR MORE DETAILS.
- DYNAMIC AND STATIC LOAD AND MOMENT RATINGS:
 - C = DYNAMIC LOAD
 - Co = STATIC LOAD
 - MX = YAW MOMENT
 - MY = PITCH MOMENT
 - MZ = ROLL MOMENT



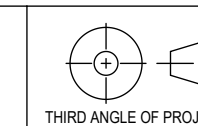
MICROGUIDE PART NUMBERS	
ASSEMBLY	xTSR9ZMUUxx+xxxx Y=xx
*PRODUCT SOLD AS ASSEMBLY ONLY	

ECN	REV.	DESCRIPTION	BY	DATE
REVISIONS				

CUSTOMER NO.	
FINISH	
HEAT TREAT	
MATERIAL	

THIS DOCUMENT IS THE PROPERTY OF THOMSON LINEAR. IT IS FURNISHED TO YOU FOR CONFIDENTIAL INFORMATION PURPOSES ONLY AND IS NOT TO BE DISCLOSED, REPRODUCED OR USED FOR MANUFACTURING PURPOSES WITHOUT THE EXPRESS WRITTEN PERMISSION OF THOMSON LINEAR.

UNLESS OTHERWISE SPECIFIED: MACHINE SURFACES: 125-μ" SURFACE FINISH; Holes and Sharp Edges: 0.00015; DO NOT SCALE DRAWINGS SYMBOLS PER ANSI Y14.5

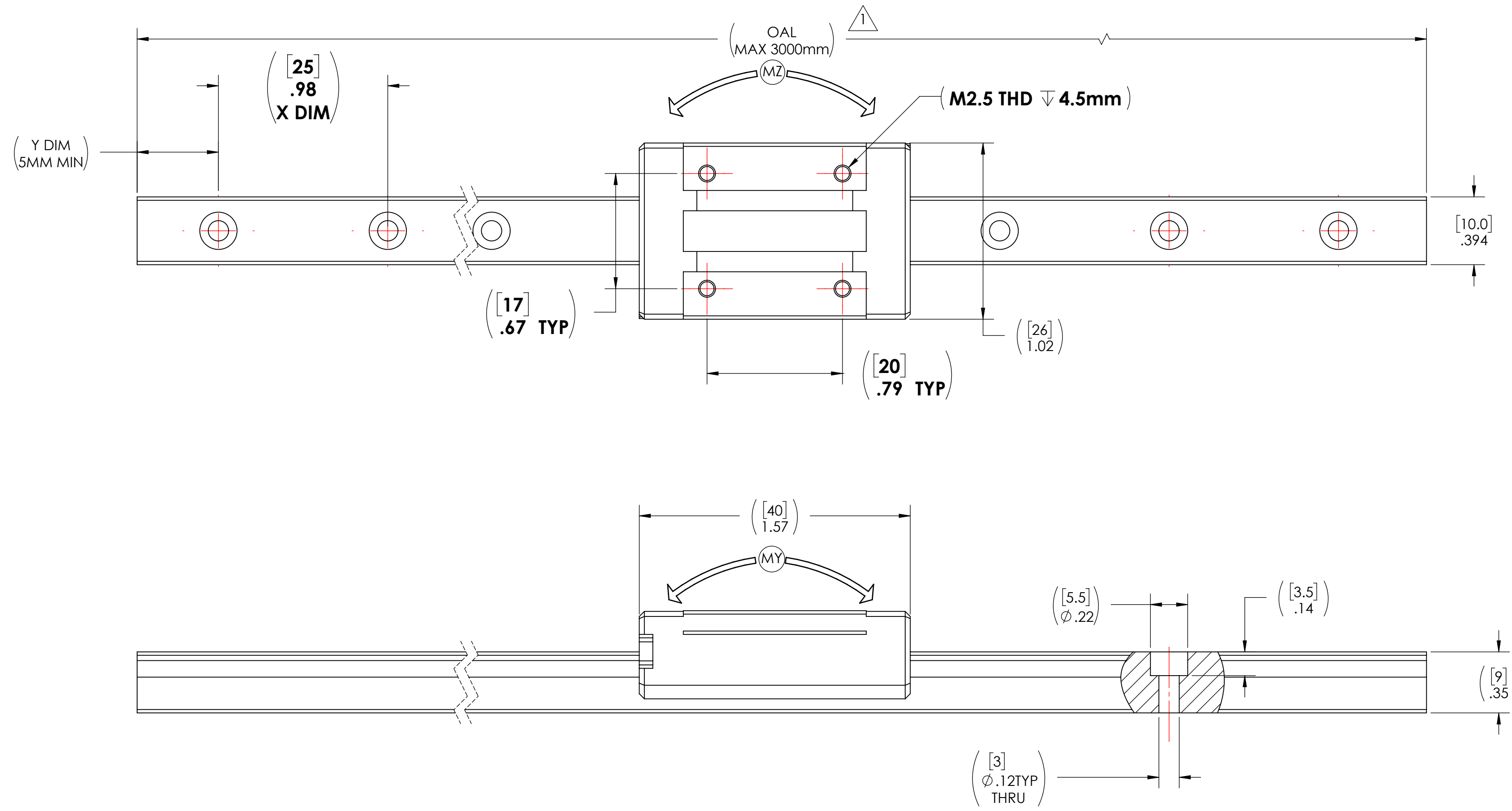


REFERENCES:	MICROGUIDE 9MM CROSSOVER
PRODUCT RELEASE NO.	
DRAWN BY:	JDB
DATE:	8/9/2023
SCALE:	2:1
PAGE:	1 of 1
SIZE:	D

THOMSON 1300 N. STATE ST. MARENGO, IL 60152

TITLE	COMPARISON DRAWING
DRAWING NO.	ACCUMINI SIZE 10 COMPARISON
REV	-

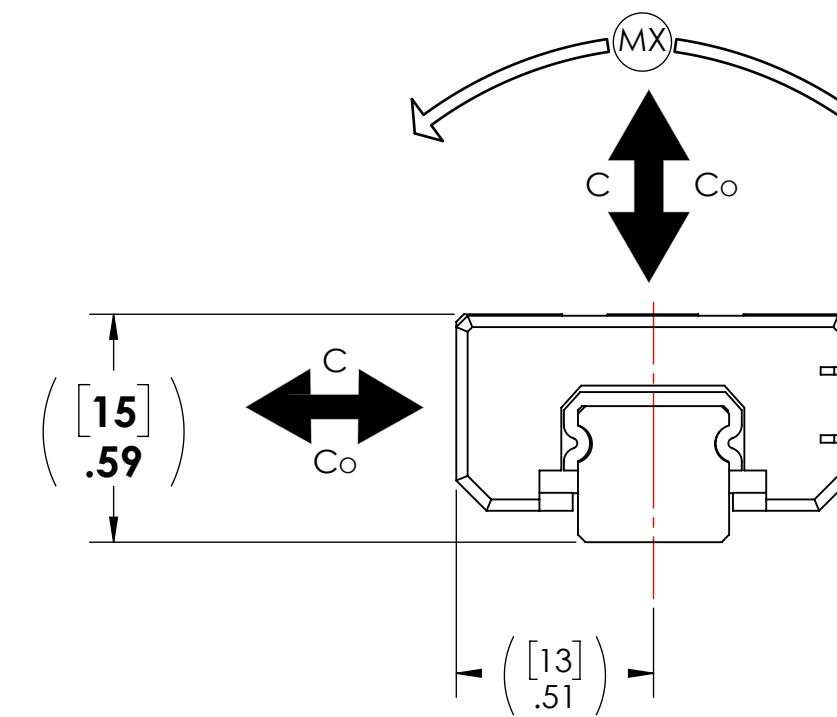
ACCUMINI 10mm ASSEMBLY



MOMENT RATINGS					
STATIC MOMENT (Nm ²)			DYNAMIC MOMENT (Nm ²)		
MX	MY	MZ	MX	MY	MZ
28	20	20	15	10	10

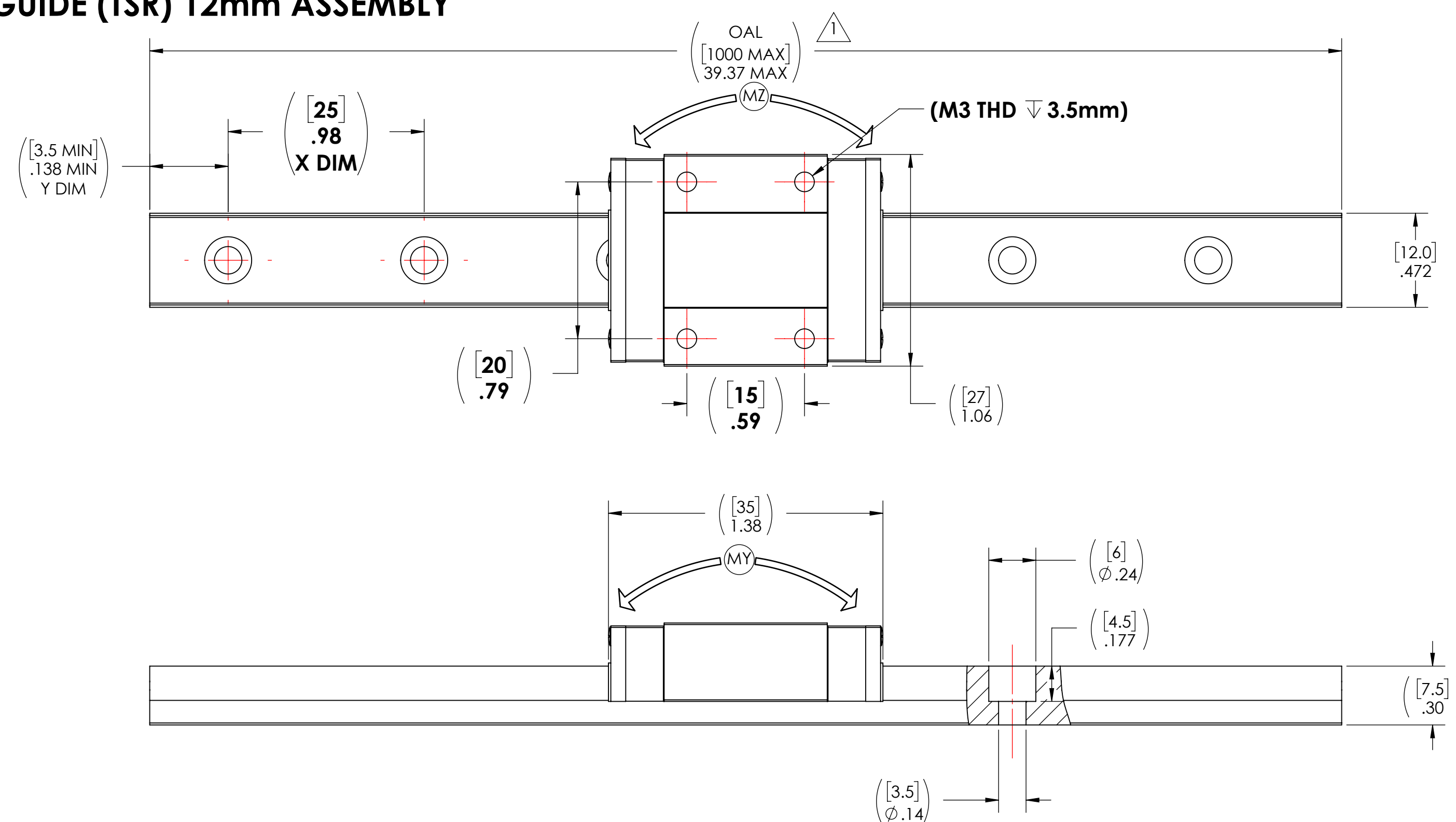
NOTES:

- MAXIMUM LENGTH FOR 1 PIECE RAIL CONSTRUCTION. BUTT JOINTING IS POSSIBLE FOR LONGER LENGTHS IF REQUIRED.
- CARRIAGE MATERIALS: POLYMER RETAINER, STAINLESS STEEL BALLS.
- CARRIAGES AND RAILS CANNOT BE INTERCHANGED BETWEEN PRODUCT FAMILIES.
- (2) ACCURACY CLASSES TO CHOOSE FROM (HIGH GRADE AND PRECISION GRADE).
- OPERATING PARAMETERS:
 - MAX VELOCITY= 3 m/s
 - MAX ACCELERATION = 50 m/s²
 - MAX TEMPERATURE= 80 °C
- DYNAMIC LOAD RATING = 3,553 N (BASED ON 50km LIFE).**
- STATIC LOAD CAPACITY = 5,300 N.
- SEE CATALOG OR WEBSITE FOR MORE DETAILS.
- DYNAMIC AND STATIC LOAD AND MOMENT RATINGS:
 - C = DYNAMIC LOAD
 - Co = STATIC LOAD
 - MX = YAW MOMENT
 - MY = PITCH MOMENT
 - MZ = ROLL MOMENT



ACCUMINI PART NUMBERS	
ASSEMBLY	xAD10AAxxLxxxx Y=xx
CARRIAGE	CD10AAxx
RAIL	RD10xLxxxx Y=xx

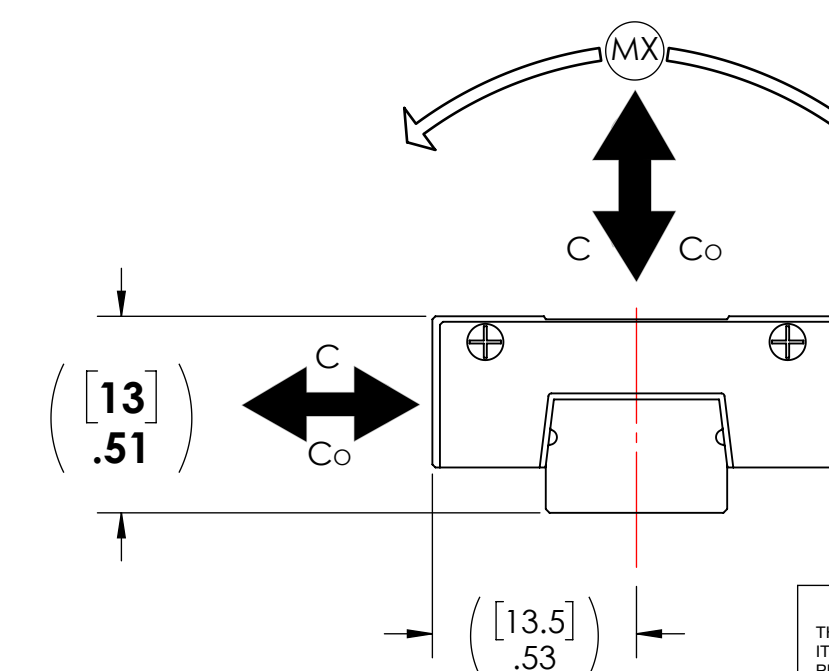
MICROGUIDE (TSR) 12mm ASSEMBLY



MOMENT RATINGS					
STATIC MOMENT (Nm ²)			DYNAMIC MOMENT (Nm ²)		
MX	MY	MZ	MX	MY	MZ
14.7	8.04	8.72	NOT RATED		

NOTES:

- MAXIMUM LENGTH FOR 1 PIECE RAIL CONSTRUCTION. BUTT JOINTING IS POSSIBLE FOR LONGER LENGTHS IF REQUIRED.
- CARRIAGES AND RAILS CANNOT BE INTERCHANGED BETWEEN PRODUCT FAMILIES.
- (3) ACCURACY CLASSES TO CHOOSE FROM (NORMAL GRADE, HIGH GRADE, OR PRECISION GRADE).
- OPERATING PARAMETERS:
 - MAX VELOCITY = 3 m/s
 - MAX ACCELERATION = 50 m/s²
- DYNAMIC LOAD RATING = 2,780 N (BASED ON 50km LIFE).**
- STATIC LOAD RATING = 4,220 N.
- SEE CATALOG OR WEBSITE FOR MORE DETAILS.
- DYNAMIC AND STATIC LOAD AND MOMENT RATINGS:
 - C = DYNAMIC LOAD
 - Co = STATIC LOAD
 - MX = YAW MOMENT
 - MY = PITCH MOMENT
 - MZ = ROLL MOMENT



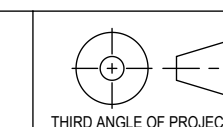
MICROGUIDE PART NUMBERS	
ASSEMBLY	xTSR12MUUxx+xxxx Y=xx
*PRODUCT SOLD AS ASSEMBLY ONLY	

ECN	REV.	DESCRIPTION	BY	DATE
REVISIONS				

CUSTOMER NO.	
FINISH	
HEAT TREAT	
MATERIAL	

THIS DOCUMENT IS THE PROPERTY OF THOMSON LINEAR. IT IS FURNISHED TO YOU FOR CONFIDENTIAL INFORMATION PURPOSES ONLY AND IS NOT TO BE DISCLOSED, REPRODUCED OR USED FOR MANUFACTURING PURPOSES WITHOUT THE EXPRESS WRITTEN PERMISSION OF THOMSON LINEAR.

UNLESS OTHERWISE SPECIFIED: MACHINE SURFACES: 125μV DEBURR HOLES AND SHARP EDGES TO 0.050mm THIS DO NOT SCALE DRAWINGS SYMBOLS PER ANSI Y14.5



REFERENCES: MICROGUIDE 12MM CROSSOVER RECOMMENDED

PRODUCT RELEASE NO.	DATE	SCALE	SIZE
JDB	8/9/2023	2:1	D
APPROVED BY	DATE	PAGE	
		1 of 1	

THOMSON 1300 N. STATE ST. MARENGO, IL 60152

TITLE	
COMPARISON DRAWING	
DRAWING NO.	REV
ACCUMINI SIZE 10 COMPARISON	-