

High Load Ball Screws – The Motion Control Solution With Higher Density

By Tobias Münch

Product Line Specialist – Screws and Screw Jacks

Thomson Industries Inc.

www.thomsonlinear.com thomson@thomsonlinear.com

Motion engineering quiz: If you need to actuate a 500 kN axial load along a 1500 mm stroke, do you use roller screw or a ball screw?

If you reflectively said roller screw, you may not be familiar with high load ball screws from Thomson as an economical and simplified alternative. Roller screws have been promoted as the only technology of choice for handling large loads when size is a constraint. But in actuality, advances in ball screw technology make special versions viable candidates for high load applications as well, and this is important because a high load ball screw is typically less than half the cost of a comparable roller screw at equivalent performance points.

What's the difference?

A ball screw (Figure 1) consists of a threaded metal shaft with a nut that rides along its length as a motor rotates the shaft. The nut connects to a table, an arm or other load as determined by the industrial process that is being automated. Re-circulating ball bearings packaged within the nut contact the threads and provides the load bearing path. The coefficient of friction between the mating components is very low which provides a system efficiency which is typically greater than 90%. The load capacity of the ball screw is then a function of the ball bearing diameter, number of ball bearings, and the surface contact area. The combination of these parameters then defines the load capacity of the assembly and therefore the resultant life of the components.

For higher loads, design engineers have specified roller screws into many applications. In a roller screw, the load bearing mechanism is a set of recirculating rollers instead of balls. The

rollers have more total surface contact area than balls, which increases the load carrying capacity and can also increase service life.

But these benefits come at premium. Compared to the relatively simple, time-tested ball system, the roller screws require extensive upfront precision machining and more complex assembly. This contributes to the overall higher cost of the roller screw, as well as a larger footprint for final installation.

Characteristics of a high load ball screw

Thomson has developed a high load ball screw by implementing a unique thread form that increases load bearing capacity four to eight times over traditional ball screws. This gives the application engineer the option of deploying a ball screw in most any application that previously required a roller screw. Or, because the life of the assembly is a direct function of the load capacity (see L_{10} Life Expectancy Calculation) using a high load ball screw in a low load application would extend the life of the product.

Standard L_{10} Life Expectancy Calculation of a Ball Screw Assembly

Bearings are often specified to give a " L_{10} " life. This is the life at which ten percent of the ball screw assemblies in that application can be expected to have failed due to classical fatigue failure or, alternatively, the life at which ninety percent will still be operating. The L_{10} life of the ball screw assembly is a theoretical life and may not represent service life of the assembly. It can be calculated according to the following formula:

$$L_{10} = (C_{am}/\text{Load})^3$$

Where: L_{10} = Life expectancy (expressed in millions of revolutions)
 C_{am} = Dynamic capacity of the ball screw

Consider, an automotive equipment assembly application, which is running a load of 100 kN, 24/7. Based on the standard life calculation, the product may last 3-4 months according to the fatigue failure analysis and statistical life expectancy. Implementing a high load ball screw, however, would double the load capacity and yield eight times the life. So the manager of each production unit has the option of going for higher load capacity, longer assembly life or the combination of the best of both.

Taking another example, an injection moulding application might require 400 kN of force over 500 mm, for which a designer might traditionally specify a roller screw. But that high force is required only for maybe the last 10 mm, when the mould is being compressed. The user then is paying a premium for high load across the full stroke. By deploying a high load ball screw, though, the designer gets the needed power at the final 10 mm, while additional load bearing potential factors into extended life for the product.

Screw Type	Diameter (mm)	Lead (mm)	Mounting Diameter (mm)	Overall Length (mm)	Dynamic Capacity (kN)	Static Capacity (kN)	Cost (€)
Standard Ball Nut	125	20	170	258	470	1534	€ 6700
Thomson High Load Ball Screw	63	20	105	249	480	1110	€ 4.200
Roller Screw	75	20	150	191	490	1265	€ 10.500

The table above illustrates the advantage of a high load ball screw in an application that requires a minimum of 470kN of dynamic load capacity. A standard configuration ball screw is capable of providing a solution but is twice the diameter and costs 60% more. A roller screw is also capable but has a nut that is close to 50% larger at 150% the price of the comparable high load ball screw.

A new high load alternative from Thomson

Thomson provides a standard range of high load ball screws up to 160 mm diameter with max. 1400 kN dynamic load capacity, and customised ball screw assemblies according to specific application demands are available upon request. Specifying high load ball screws in applications previously relegated to roller screws can save money, extend product life or both. Any new application will require careful analysis of load capacity, product life and cost, and in doing so, there may still be some applications well-suited to roller screws. But given new ball screw technology advances that increase ball screw load bearing capacity, it is now wise to consider Thomson high load ball screws in any application for which you might now be considering a roller screw. It could pay off significantly.



Title image: Thomson provides high load ball screws that are commonly used in injection moulding machines, metal pressing and forming, test rigs, straightening machines, tube bending machines.

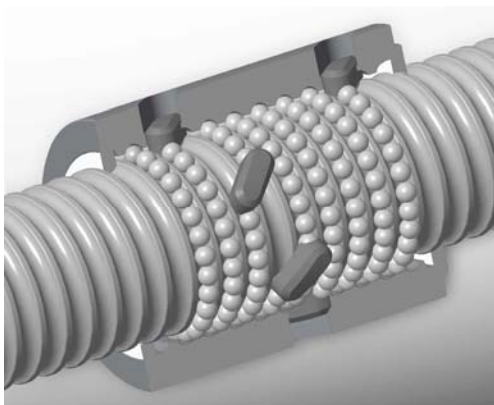


Figure 1: Thomson ball screws offer a faultless, gentle recirculation of the balls and precise positioning.



Figure 2: Roller bearing with grooved rolling elements.