

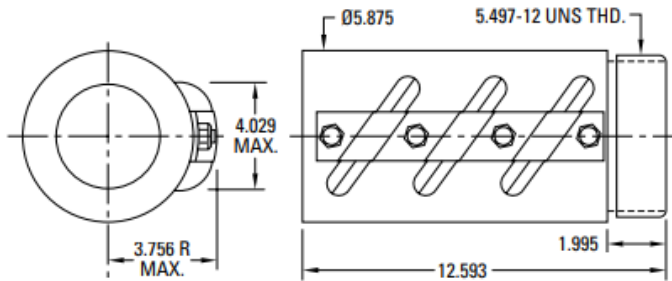
4.000 x 1.000 Ball Screw & Ball Nut (R-4001)



Thomson Standard Parts

Nut: 8140-448-001

- Safety Feature: Safety Thread, Solid Deflectors
- Wiper Kit included
- Not recommended to use with Nook Screw



Screw: 190-9564

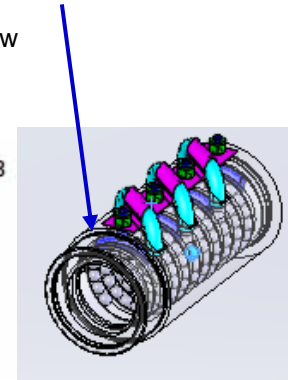
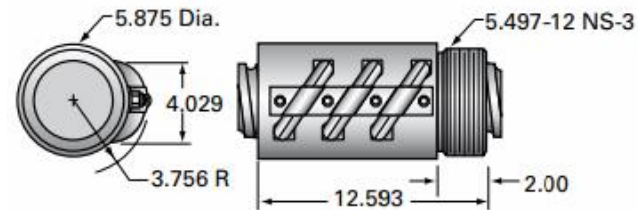
- Screw Material: 1050 Steel
- Standard Finish: Polished & Oiled



Recommended Nook Replacement

Nut: SBN3258

- Safety Feature: Safety Thread, Solid Deflectors (shown in Blue)
- Wiper Kit optional
- Not recommended to use with Thomson Screw



Screw: 4000-1000 SRT

- Screw Material: 4150 Steel
- Standard Finish: Black Oxide



Key Differences:

- Screw Material: 4150 Steel is a higher grade steel which provides higher wear resistance and strength
- Screw Finish: Black Oxide coating – Matte Black finish that provides more lubricity and rust protection during storage

Nut Assembly:

FORM/FIT/FUNCTION:	NOOK	THOMSON
OD	5.875 +/- .005	5.875 +/- .005
OAL	12.593 +/- .010	12.593 +/- .010
V-THREAD LENGTH	2.000 +/- .010	1.995 +/- .015
DYNAMIC LOAD (lbs)	85,758	85,758
SCREW ROOT Ø	3.340	3.340