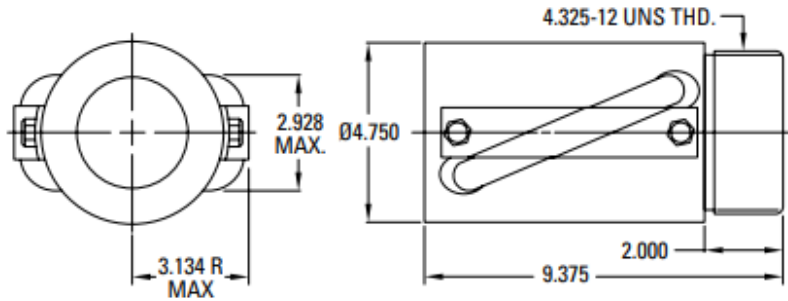


# 3.000 x 1.500 Ball Screw & Ball Nut (R-3015)



## Thomson Standard Parts

- **Nut: 8130-448-018**
  - Safety Feature: Solid Deflectors
  - Wiper Kit included
  - Not recommended to use with Nook Screw

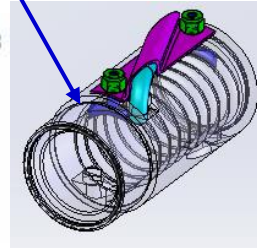
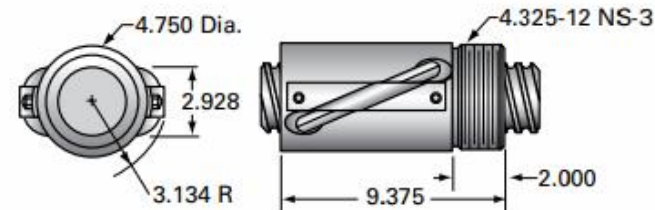


- **Screw: 190-9562/190-9563**
  - Screw Material: 1050 Steel
  - Standard Finish: Polished & Oiled



## Recommended Nook Replacement

- **Nut: SBN4986**
  - Safety Feature: Solid Deflectors (shown in Blue)
  - Wiper Kit optional
  - Not recommended to use with Thomson Screw



- **Screw: 3000-1500 SRT**
  - Screw Material: 4150 Steel
  - Standard Finish: Black Oxide



## Key Differences:

- Screw Material: 4150 Steel is a higher grade steel which provides higher wear resistance and strength
- Screw Finish: Black Oxide coating – Matte Black finish that provides more lubricity and rust protection during storage

- Nut Assembly:

FORM/FIT/FUNCTION:	NOOK	THOMSON
OD	4.750 +/- .001	4.750 +/- .001
OAL	9.375 +/- .010	9.375 +/- .005
V-THREAD LENGTH	2.000 +/- .010	2.000 +/- .005
DYNAMIC LOAD (lbs)	53,646	53,646
SCREW ROOT Ø	2.480	2.480