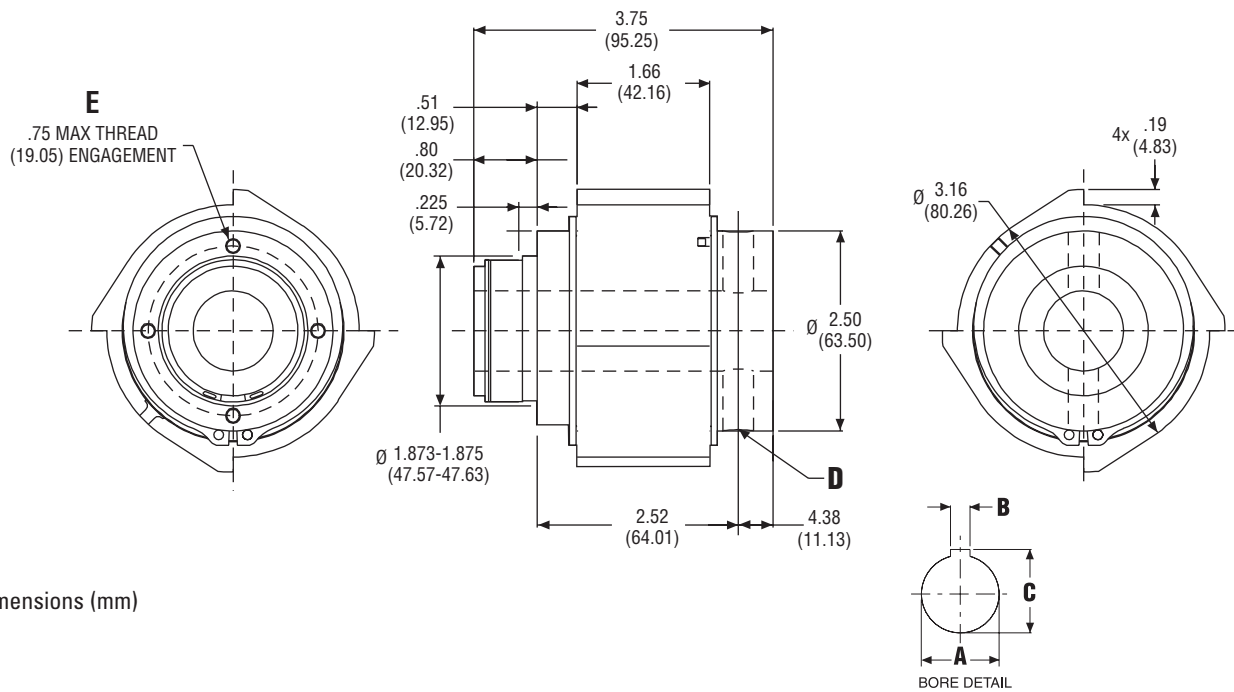


ACCM Clutch

Dimensions & Specifications



Dimensions (mm)

| PERFORMANCE | |
|--|---|
| Static torque Standard Heavy Duty | 1,500 lb-in (2,500 lb-in available) Consult factory |
| Inertia, rotating parts | 2.0 lb-in ² |
| Maximum radial bearing load at maximum speed | 150 lbs |
| Maximum operating speed | 400 RPM |
| Response time, voltage on at full speed | 60 MS |
| Weight | 4 lbs. |

| BORE & KEYWAY DATA | | | | |
|--|--------------------------------|------------------------------|-------------------------------------|------------------------------|
| Bore A | Keyway Width B | Keyway Depth C | Set Screws D | Mounting Holes E |
| 1.0005-1.0025 (25.412-25.464) | 0.251-0.253 (6.37-6.43) | 1.114-1.124 (28.29-28.55) | #1/4-20 x 0.5 Hex Skt. Set Screw | 4x #10-32 UNF on 2.125 BC |
| 1.2505-1.2525 (31.762-31.814) | 0.3135-0.3155 (7.962-8.014) | 1.389-1.399 (35.28-35.54) | #1/4-20 x 0.5 Hex Skt. Set Screw | 4x #10-32 UNF on 2.125 BC |
| 1.3755-1.3775 (34.937-34.989) | — | — | 2x 0.376-0.382 Hole @ 180° | 4x #10-32 UNF on 2.125 BC |
| 1.4380-1.4400 (STD) (36.525-36.576) | — | — | 2x 0.376-0.382 Hole @ 180° | 4x #10-32 UNF on 2.125 BC |